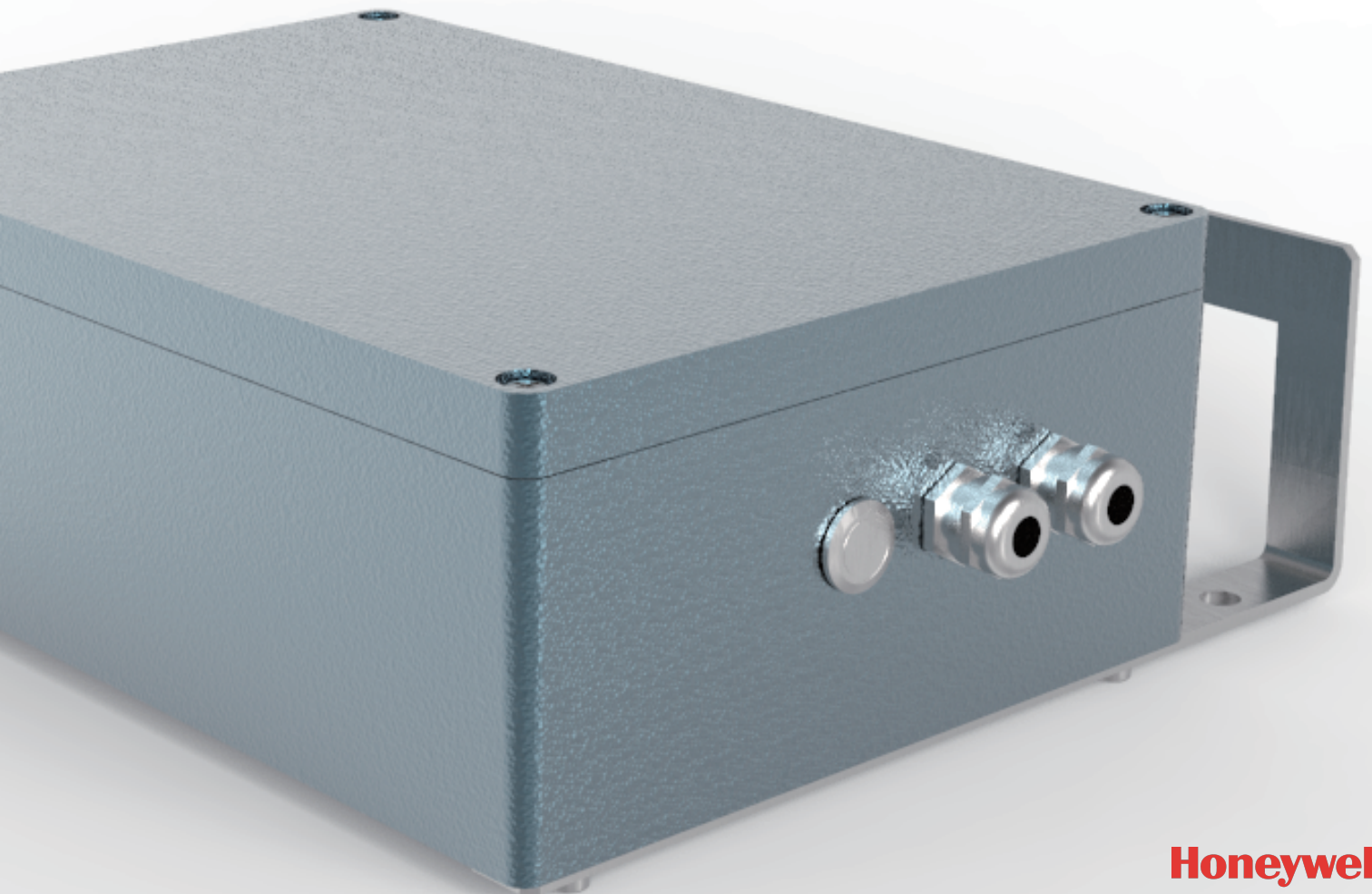


CityAir D3

CityAir-D3 is a CE certified duct standard air quality monitor. The shell uses corrosion resistant aviation aluminum material and has an IP65 outer layer protection to ensure the device to fully function for outdoor environment. Fix-time semiconductor relay can control the time for the sampling pump in order to prevent foreign matter to enter the ventilation system while system is offline. For data accuracy, sampling tube adopts PU Polyurethane Antistatic hose, which can effectively control particles from residing on the wall of the tube when the device have been working for a long time.



| Parameter | Range | Linearity | Resolution |
|--------------------|---------------------------|--|--------------------|
| Temperature | 0 - 40°C | ±2°C | 0.1°C |
| Humidity | 20 - 85%RH | ±5%RH | 1%RH |
| Carbon Dioxide | 400 - 2000ppm | ±70 ±5% reading | 1ppm |
| PM _{2.5} | 1 - 500µg/m ³ | ±(5+10% of reading)<@50 ±(20 of reading)<@500 | 1µg/m ³ |
| TVOC | 125 - 2000ppb | ±(10+10% of reading) | 1ppb |
| Formaldehyde | 0 - 5ppm | ±15% reading | 10ppb |
| * PM ₁₀ | 0 - 1000µg/m ³ | ±10% reading (>100µg/m) ³ | 1µg/m ³ |

Remark: *Optional Parameter

Product Feature

- Preset time for the gas pump working hour
- Special sampling technology, do not absorb particulate
- Up to 12000 hours life span for air pump
- Separate gas monitor chamber for stable airflow
- Multiple communication transmission modes

| | |
|---------------|-----------------------|
| Communication | Wi-Fi RS485 |
| Power supply | DC24V |
| Install | Ceiling Mount |
| Size | 250mm x 100mm x 150mm |
| Weight | 6000g |
| Support | PC Android IOS |